

LEG 06

Partenza: **SKOE Orocué**

Arrivo: **SKBO Bogotá**

SKOE Position: N 4° 47' 31" - W 71° 21' 24"

Altitude: 551 ft / 168 m - Magnetic Variation: 7,1° West

SKOE Runway information:

Number	Category	Heading	Length	Width	Surface
04	n/a	41	4856 ft / 1480 m	82 ft / 25 m	Asphalt
22	n/a	221	4856 ft / 1480 m	82 ft / 25 m	Asphalt

SKBO Position: N 4° 42' 6" - W 74° 8' 49"

Altitude: 8361 ft / 2548 m - Magnetic Variation: 5,121° West

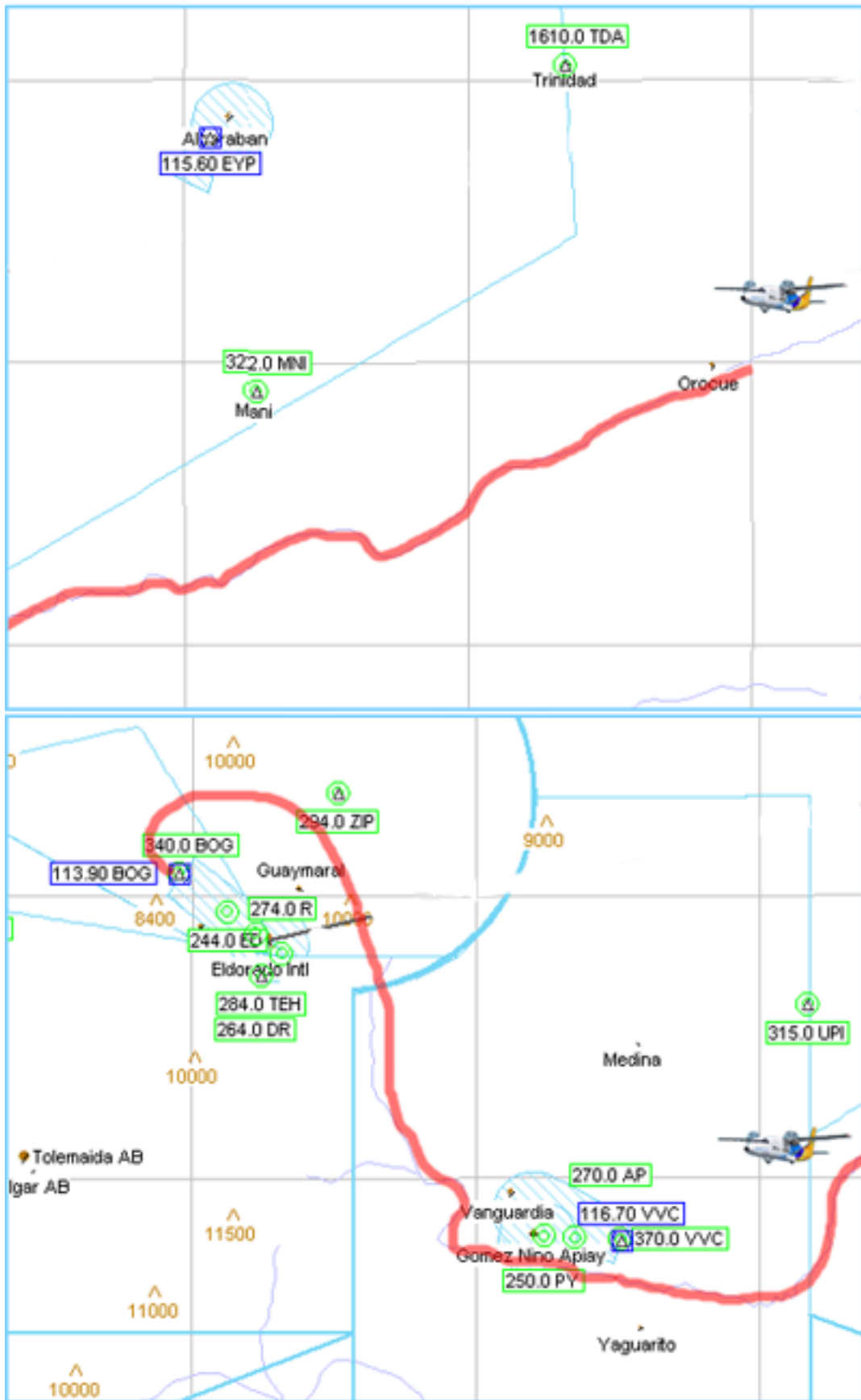
Name	Frequency	Callsign
Bogota Center	125,1	SKED_CTR
Bogota Approach	121,3	SKBO_APP
Bogota Departure	121,3	SKBO_DEP
Bogota Tower	118,1	SKBO_TWR
Bogota Ground	122,75	SKBO_GND
Bogota Clearance Delivery	121,8	SKBO_DEL

Runway information:

Number	Category	Heading	Length	Width	Surface
12	n/a	135	3423 ft / 1043 m	98 ft / 30 m	Asphalt
13	n/a	135	12467 ft / 3800 m	157 ft / 48 m	Asphalt
13L	n/a	132	12467 ft / 3800 m	157 ft / 48 m	n/a
13R	n/a	132	12467 ft / 3800 m	148 ft / 45 m	n/a
30	n/a	315	3423 ft / 1043 m	98 ft / 30 m	Asphalt
31	n/a	315	12467 ft / 3800 m	157 ft / 48 m	Asphalt
31L	n/a	312	12467 ft / 3800 m	148 ft / 45 m	n/a
31R	n/a	312	12467 ft / 3800 m	157 ft / 48 m	n/a

Approach information:

Number	Type	Id	Frequency	Heading	Angle	Range
13	ILS	IEDR	109,9	n/a	n/a	n/a
13L	ILS	IEDR	109,9	132	n/a	16 nm / 26 km
13R	n/a	IADO	110,7	n/a	n/a	16 nm / 26 km



AIRPORT DIAGRAM

AFD-2311 [USAF]

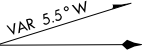
ELDORADO INTL (SKBO)

BOGOTA, COLOMBIA

ATIS *113.9
 ELDORADO TOWER
 118.1 (13L-31R)
 118.25 (13R-31L)
 GND CON
 121.8 (13L-31R)
 122.75(13R-31L)
 CLNC DEL
 121.6 (0900-0200Z)
 121.8 (0200-0900Z)

74°10'W

ELEV 8350
 197 x 148
 132.5°



JANUARY 2003
 ANNUAL RATE OF CHANGE
 0.2° W

74°09'W

12,467 x 148

HANGARS

8500

HANGARS

CATAM AFB

FIRE STATION

FIRE STATION

ELEV 8353

ELEV 8355
 197 x 148
 312.5°

CONTROL TOWER
 8475

MAIN TERMINAL

CARGO TERMINALS

INTERNATIONAL CARGO RAMP/
 AMC TERMINAL

HANGARS

FREIGHT TERMINAL

12,467 x 148

FIELD
 ELEV
 8361

74°08'W

04°11'N

04°43'N

HANGARS

MAINTENANCE

312.5°
 ELEV 8356

RWY 13L-31R
 PCN 104 F/D/W/T
 RWY 13R-31L
 PCN 80 F/C/W/T

04°42'N

AIRPORT DIAGRAM

WGS DATUM

BOGOTA, COLOMBIA

ELDORADO INTL (SKBO)

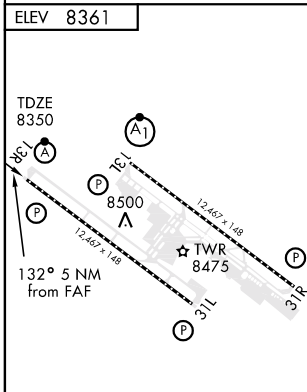
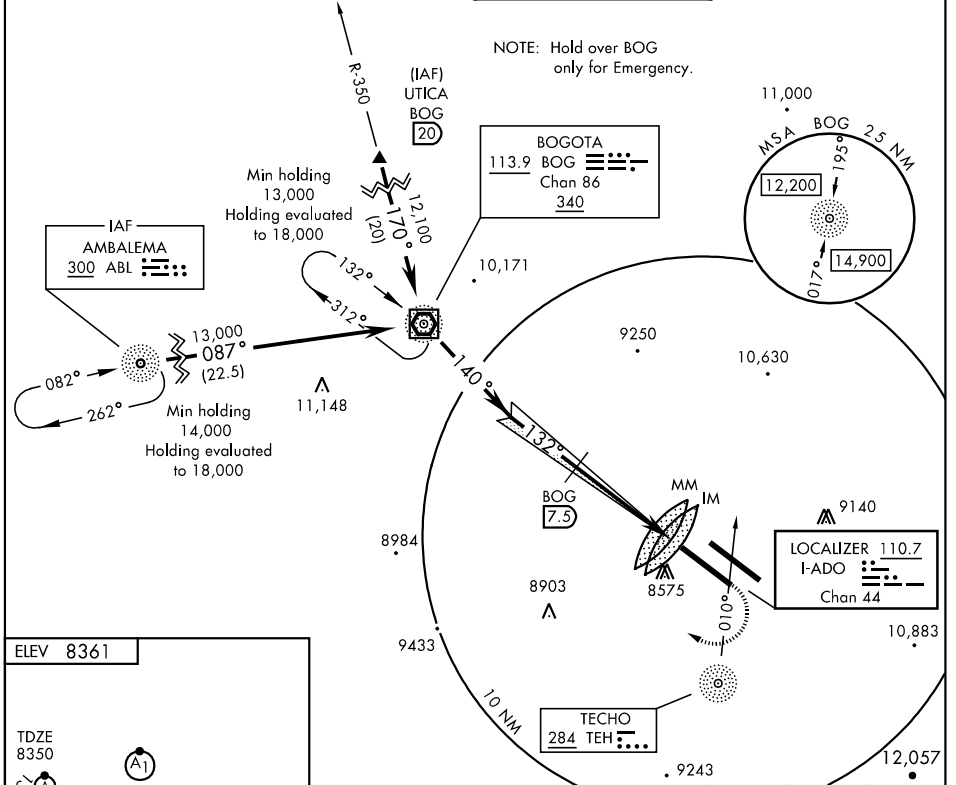
LOC I-ADO 110.7 Chan 44	APCH CRS 132°	Rwy Idg 12,467 TDZE 8350 Arpt Elev 8361
--------------------------------------	-------------------------	--

[USAF] AL-2311 (DAAC)

ELDORADO INTL (SKBO)

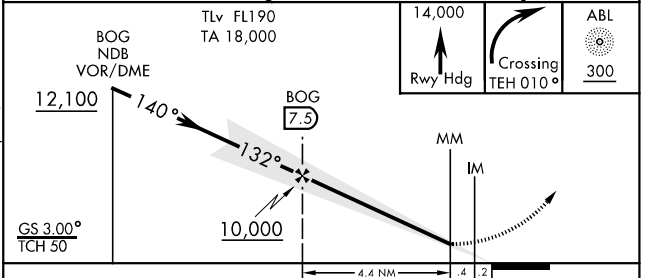
ALSF-2
MISSED APPROACH: Climb on runway heading until crossing TEH NDB bearing 010°, then turn right to ABL NDB and hold at 14,000 and await ATC instructions.

ATIS * 113.9	BOGOTA APP CON 119.5 121.3	ELDORADO TOWER 118.1	GND CON 121.8
-------------------------------	---	---------------------------------------	--------------------------------



HIRL all Rwy
 TDZL/CL RWY 13L and 13R
 REIL Rwy 31L

FAF to MAP 4.8 NM					
Knots	60	90	120	150	180
Min:Sec	4:48	3:12	2:24	1:55	1:36



CATEGORY	A	B	C	D
S-ILS 13R		8550-1200m 200 (200-1200m)		
S-LOC 13R		8750-1200m 400 (400-1200m)		
CIRCLING	NOT AUTHORIZED			